

Counted thread fan pouch

FOR THE QUEEN'S TREASURE CHEST

Materials

3½ x 21" piece of embroidery fabric

Lining fabric

30" or so of decorative cord; a button or large bead

Embroidery thread, needles, hoop, scissors

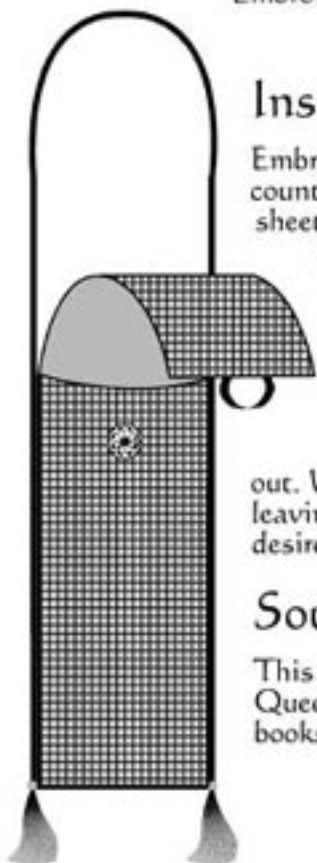
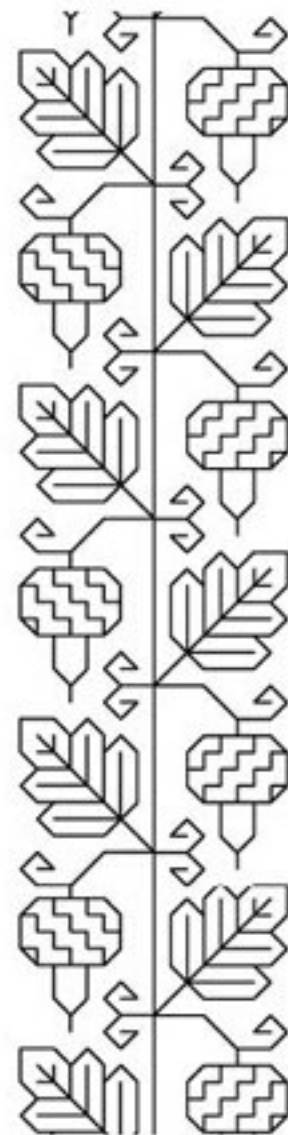
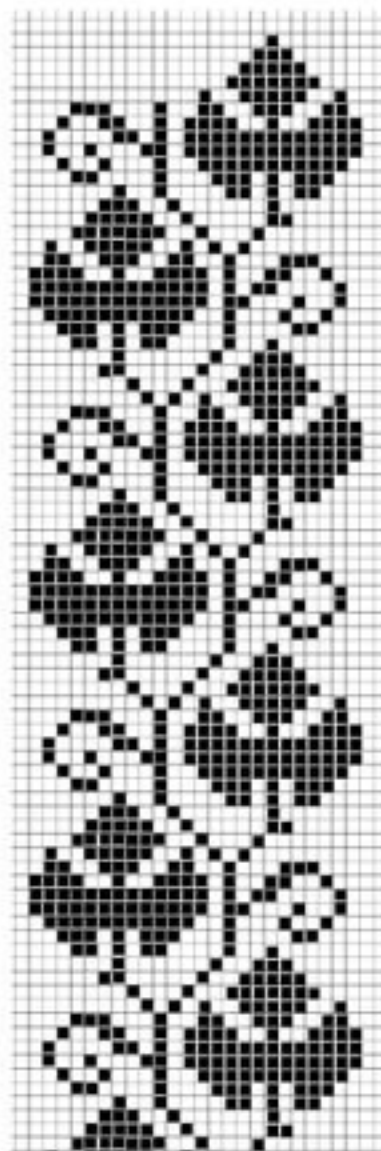
Instructions

Embroider the strip of fabric in counted thread cross stitch, pattern darning, or counted thread satin stitch. Patterns for these techniques can be found on this sheet; or use any embroidery technique you like to decorate your fabric.

When the embroidery is complete, lay the right side of the embroidered fabric together with the right side of the lining fabric. Stitch around, leaving an opening to turn inside out. Turn right side out and press; stitch opening closed. Fold strip at the 7 inch mark to make a pocket for the fan; whipstitch the sides together. Make a small loop on the unfolded end to go over a bead or button. Place a bead or button ¼ inch from the top edge of the pouch so that the loop will close over it, preventing the fan from sliding out. With a whip stitch, add cording or rat-tail cord up the sides of the pouch, leaving enough length to loop over a belt. Add tassels and beads to pouch as desired.

Sources

This project was designed by Mistress Jania of Call Duck Manor, keeper of the Queen's Treasure Chest. The patterns are all re-drawn from period pattern books.



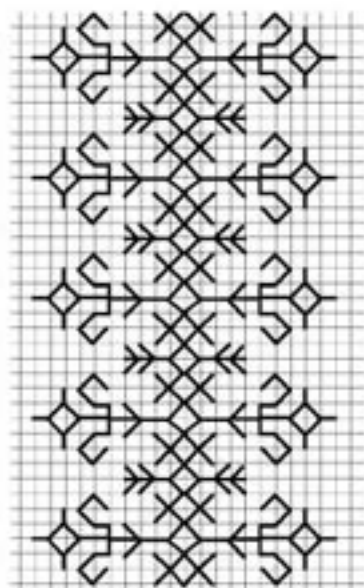
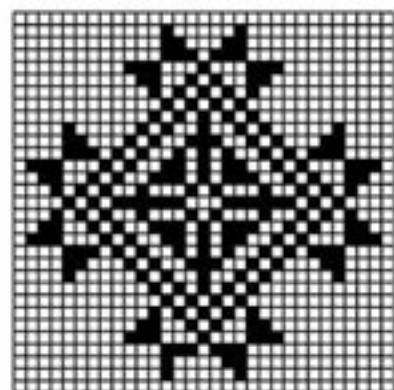
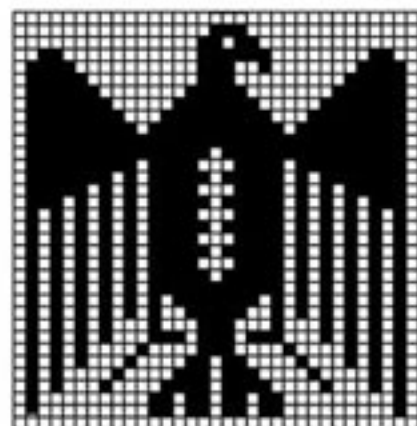
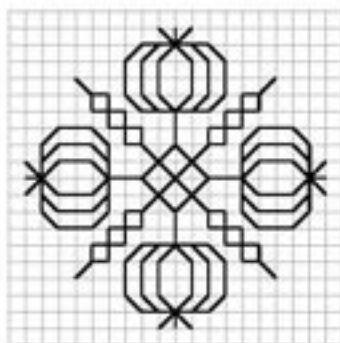
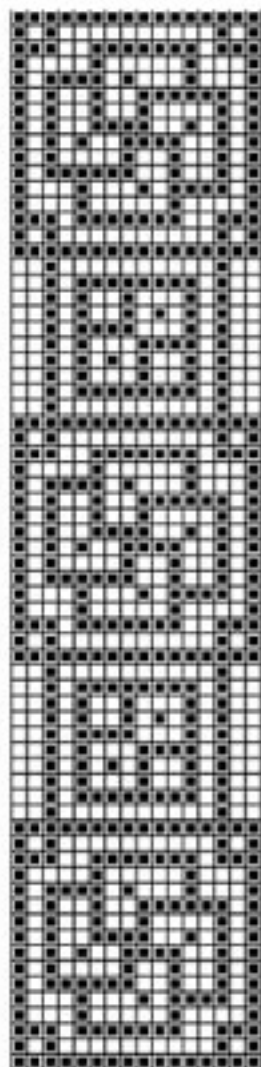
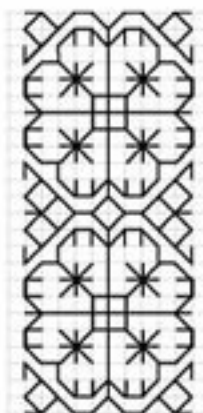
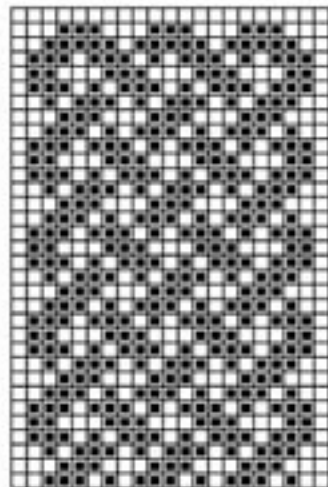
Sponsored by

The Needleworkers Guild of the Kingdom of the West (SCA)

Disclaimer: This flyer is published by and for the Needleworkers Guild of the West Kingdom of the Society for Creative Anachronism, Inc. It is not a corporate publication of the SCA, Inc., and does not delineate SCA, Inc. policy. Copies of this flyer and other Needleworkers Guild literature may be obtained from Sabrina de la Bere, Guild Minister, P. O. Box 1809, El Granada, CA 94018; phone 650-712-8405; e-mail <SabrinadelaBere@coastside.net>.

Cross stitch & blackwork

These techniques may be familiar to you already. Band patterns can be worked the whole length of the cloth strip for the fan pouch, or individual motifs like the eagle or star can be worked several times in a vertical row. (For patterns like the eagle or the vines on the front of this page, plan carefully so the motif is right side up on the back, front, and cover flap!) All these patterns can be worked in threads and colors of your choice, and embellished with beads if you like. See the Guild website at <http://www.users.drak.net/needlework> for stitching tips!



Pattern Darning

Many cross-stitch patterns can be adapted to pattern darning. In the example at left, instead of working a separate cross stitch over each square on the fabric, simply work a running stitch across each row, over the darkened squares in the chart and under the white squares. Where two dark squares adjoin, carry the thread over both squares at once before going back through the fabric. Experiment with

thread thickness to get the right coverage; for instance, instead of working a cross stitch across 2 threads of ground fabric with 3 strands of cotton floss, try working 2 parallel running stitches over the same 2 threads with 6 strands of floss. Pattern darning works best with patterns that don't have more than about five squares in a row either dark or light.

Counted Satin Stitch

Patterns like these below can be worked to fill a vertical band up the center of the fabric. The lattice pattern at bottom left can be worked with or without the small stitches filling the "holes."

