

# Zigzag pincushion

FOR THE QUEEN'S TREASURE CHEST

## Materials

28-count linen, about 4 x 4 inches

1 skein DMC embroidery floss in each of the colors 783 (gold), 781 (red), 895 (green), and white (use your own color scheme if you prefer)

Muslin and backing fabric of your choice (not included)

Blunt-pointed tapestry needle, approx size 24



## Instructions

Stretch your linen in an embroidery frame or hoop. You may find it helpful to take one strand of light-colored floss or sewing thread and outline a square on your fabric the size of your motif, to serve as a boundary for the embroidery. (NOTE that the motifs on the back of this page are NOT all the same size.)

Following the stitch diagram and chart on the back of this page, and using 3 (three) strands of floss, work one of the square motifs in solid rows of long-armed cross-stitch, working the stitches in and out of the angles in continuous lines wherever possible (see photos).

The embroidery may be worked in simple cross stitch rather than long-armed cross stitch if you prefer.

## Finishing

Cut out the motif, leaving at least 1/2 inch margin on all sides. Finish the edges to prevent raveling (whipstitch, blanket stitch or machine stitching). Cut a square of muslin the same size and lay the muslin on the wrong side of the embroidered square. Turn the margins of both layers under as if they were one piece of cloth. Lightly steam-press the motif face down on a towel, straighten it if necessary, and allow to dry. Cut a square of backing

(continued →)

Sponsored by

The Needleworkers Guild of the Kingdom of the West (SCA)

At left & below, samples of long-armed cross stitch: partially finished square and enlarged detail.



(continued)

fabric and fold its margins under in the same way.

With the two WRONG sides together, and the embroidery facing out, work a line of long-armed cross stitch completely around the edge to join the two pieces together (see diagram). Before sewing the last open edge, stuff the pincushion lightly with batting. Complete the last edge and add a 1/2-inch loop of cord or ribbon for hanging.

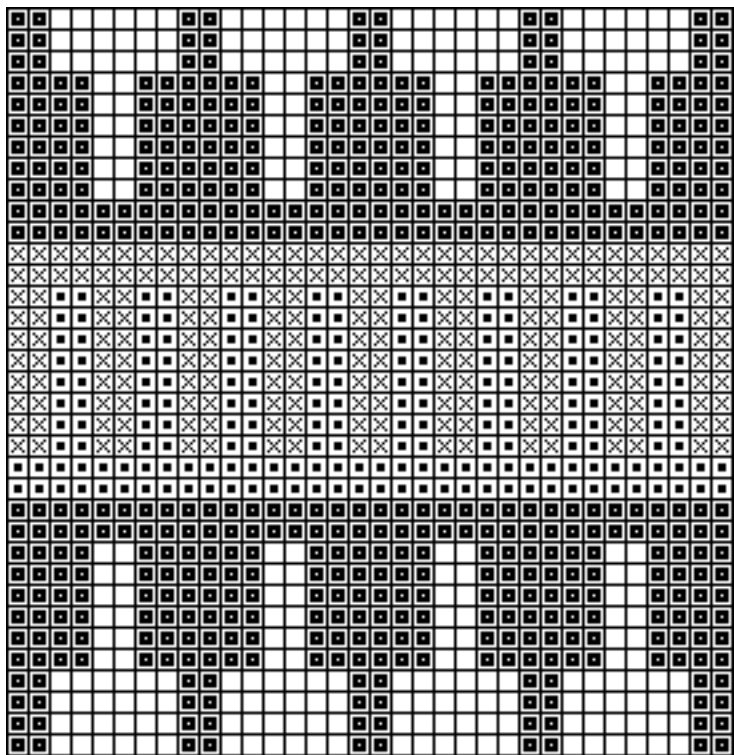
## Sources

The original from which this project was adapted is a purse, solidly embroidered in long-armed cross-stitch in silk on linen, from the Cathedral Treasury at Sens, near Paris. Sens was for many years the premier archdiocese of France, and so has received gifts and collections from many other churches, especially those destroyed during the French Revolution.


Pictured here is one side of the purse, from an 1892 photo. The original purse is on display in Sens, but the colors are very much faded. The colors given are a guess at what it may have looked like when new.

Such purses, which may have begun their useful lives as fashionable accessories, were sometimes donated to churches to hold precious relics. —

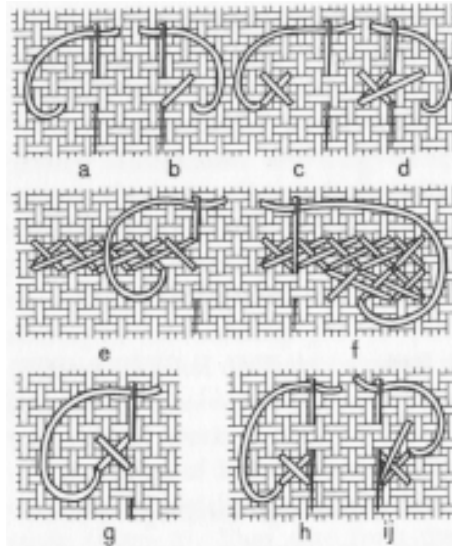




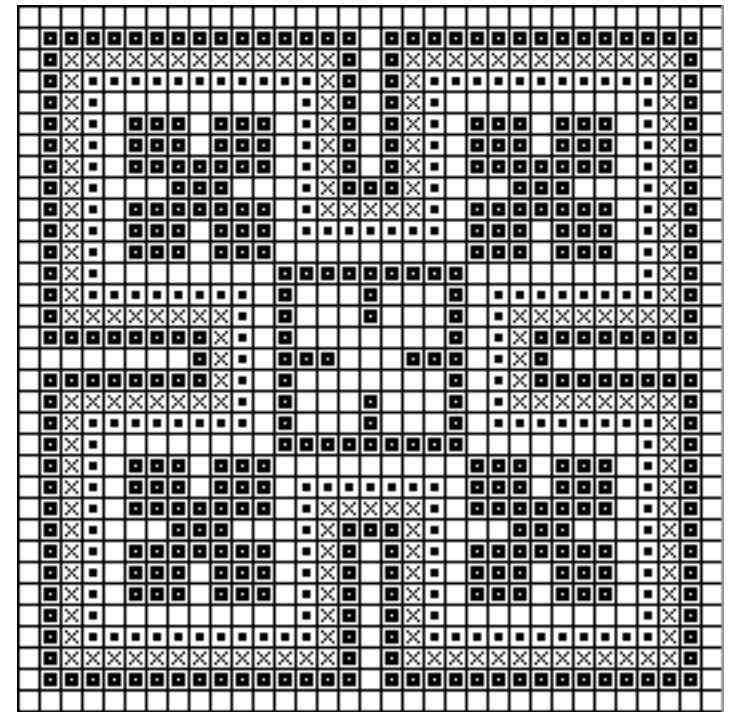
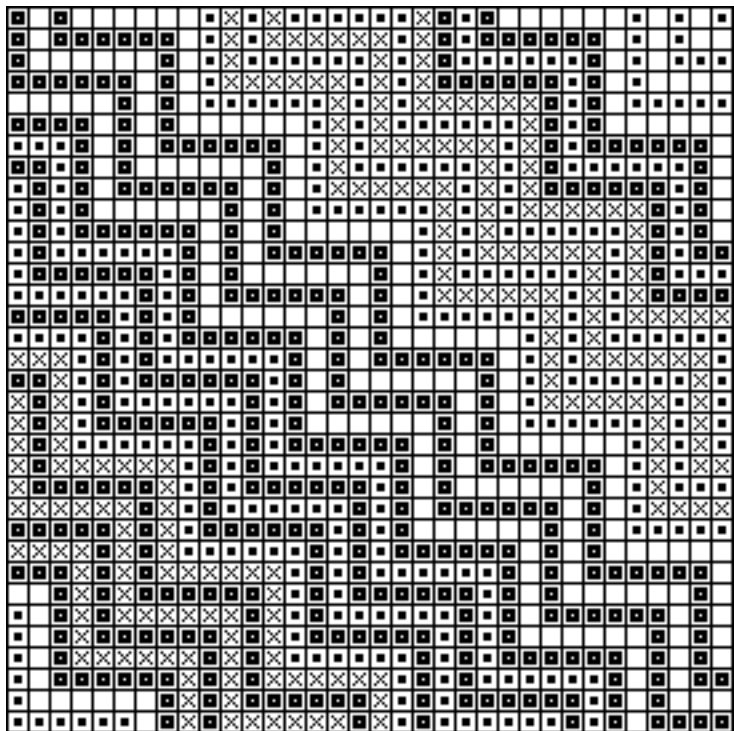
COLORS  
THIS PAGE:

-  Dark red
-  Green
-  Gold
-  White

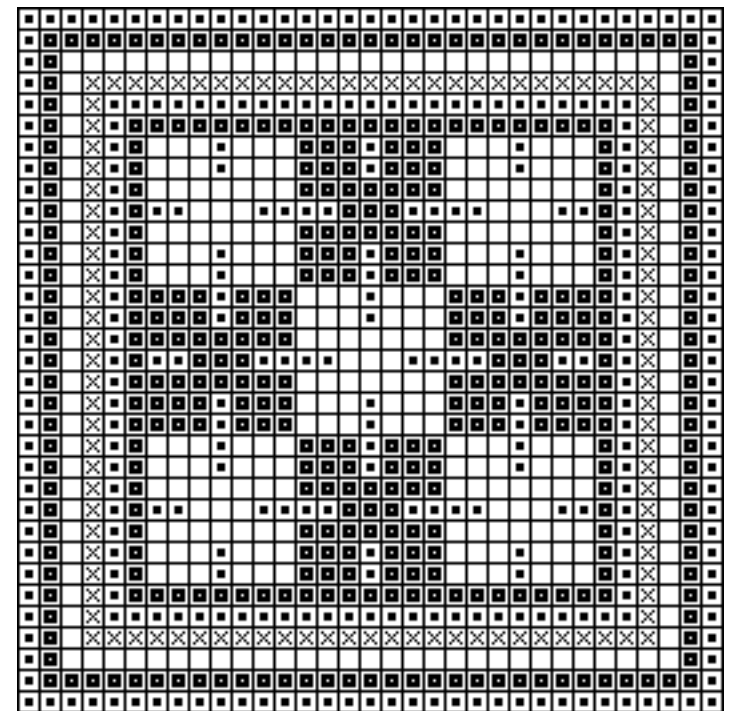
LONG-ARMED CROSS STITCH  
(worked horizontally and vertically)



↑ These motifs are 34 stitches square ↓



↑ These motifs are 33 stitches square ↓



STITCHING FRONT  
& BACK TOGETHER  
with a row of long-armed  
cross stitch catching  
both edges

